

Victim Experience Map

Effectively serving a victim to ensure victims' rights requires knowing the system, knowing the actors with whom the victim will interact, and ensuring that we have relationships with each of those actors.

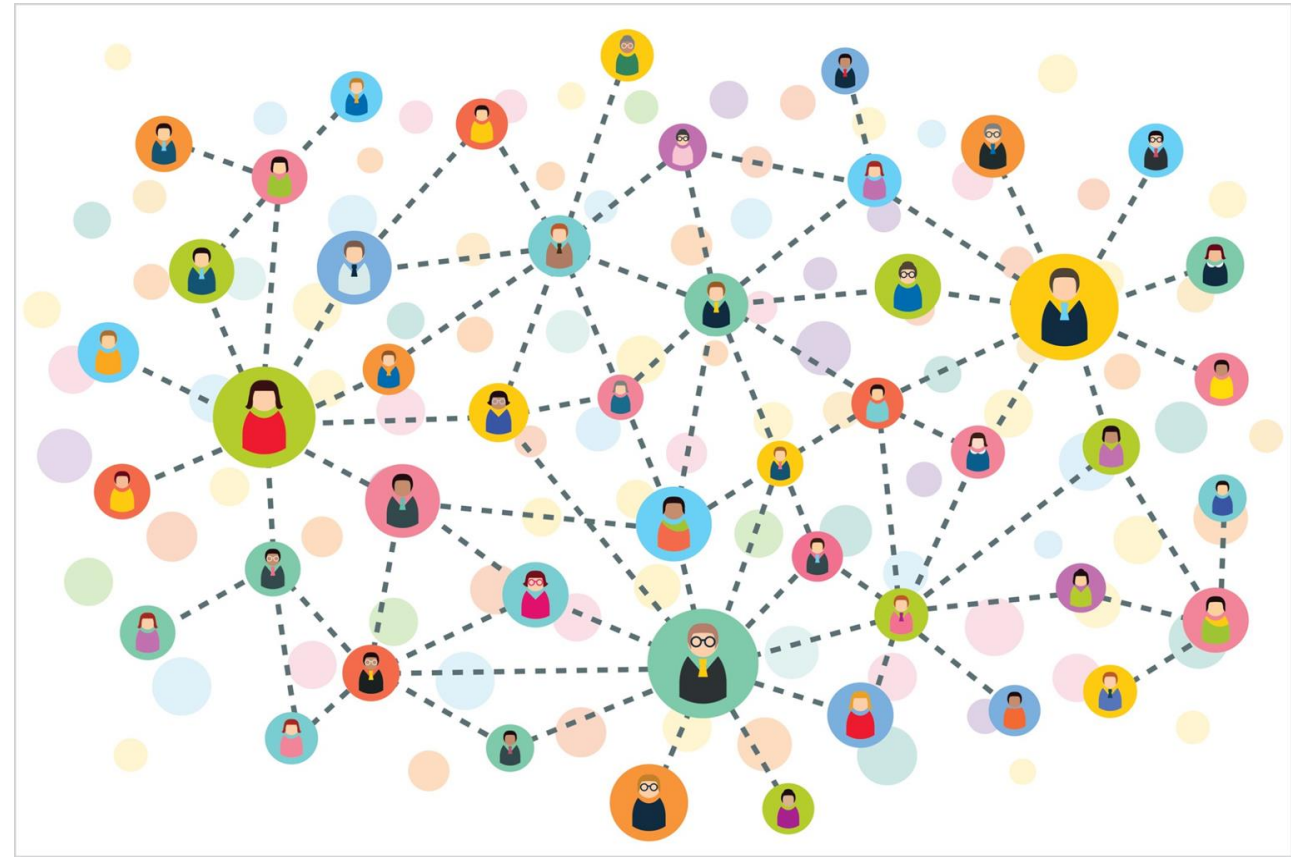
We are going to provide an example here for you to copy as a template. You can create your map on a sheet of paper if you prefer.



Step 1

Identify everyone that a victim may come in contact with from the time of victimization through sentencing. Do this first by job title.

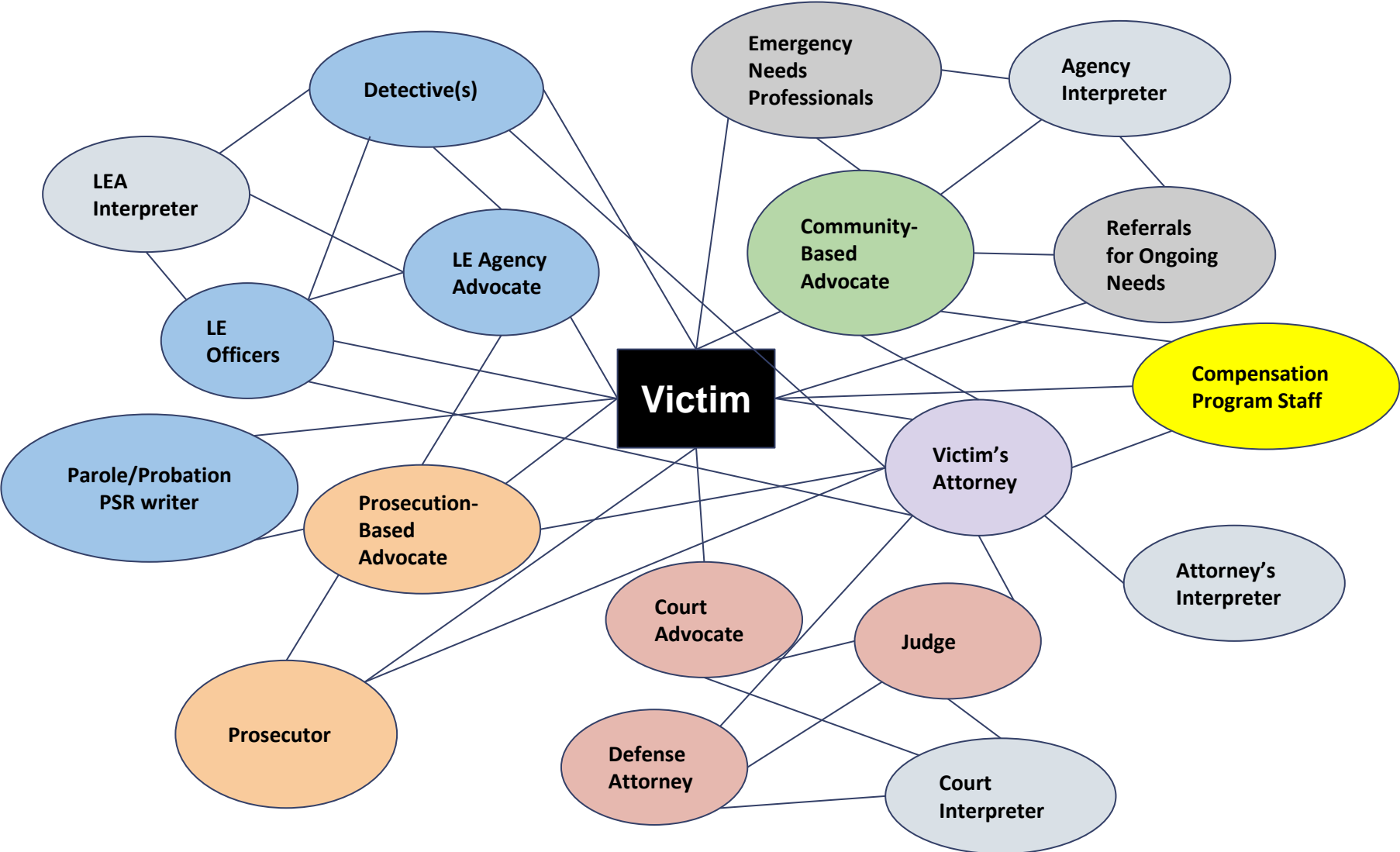
The example slide lists several common roles – feel free to add others, modify lines of connections, and delete existing options, so that the map reflects victim services and relationships in your community.



Step 1: Example Map – the Victim’s Experience of Criminal Justice

Key

- Law Enforcement
- Government Attorney/ Prosecutor
- Courthouse
- Victim’s Attorney
- Community Based Advocates
- Additional Resources
- Compensation



Step 2

Now add to your map any specific names of people in those positions that you know. Be sure to put yourself in one of the positions.

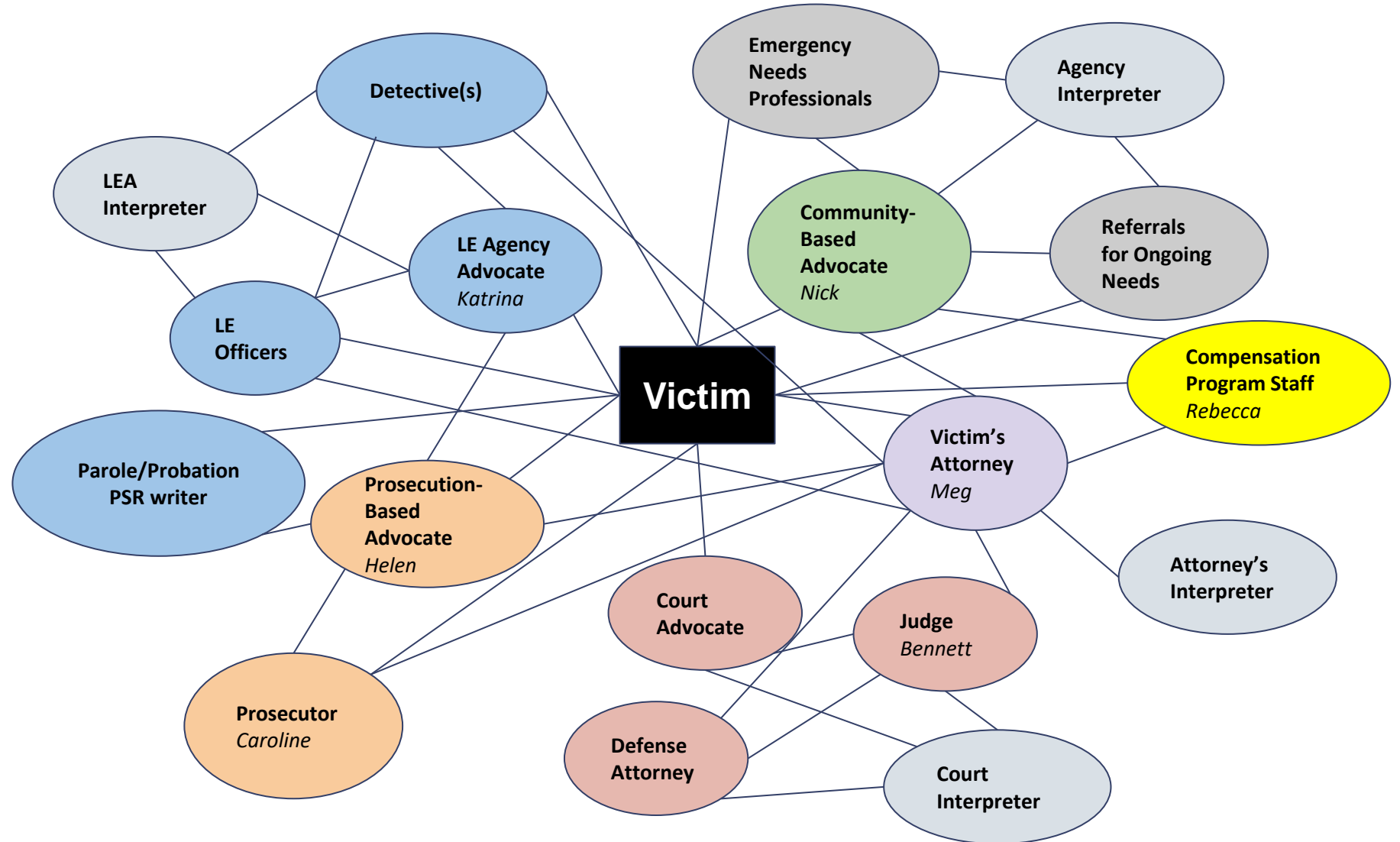
It's okay if you don't know names for everyone. You can leave them blank or put a question mark.



Step 2: Example Map – the Victim’s Experience of Criminal Justice

Key

- Law Enforcement
- Government Attorney/ Prosecutor
- Courthouse
- Victim’s Attorney
- Community Based Advocates
- Additional Resources
- Compensation



Step 3 (and beyond)

We will be continuing to use this exercise to add to and modify these maps during the live session.

Please save it / have it available to use again then.

