

VICTIM SERVICE
PROVIDERS ACROSS
MONTANA

Kim Ranger,
Montana Coalition
Against Domestic
and Sexual
Violence

Tawny Rogers,
Montana Board of
Crime Control

LOCAL ADVOCACY VS. SYSTEMS BASED VICTIM SERVICES

LOCAL ADVOCACY AGENCIES

WHAT THEY CAN DO:

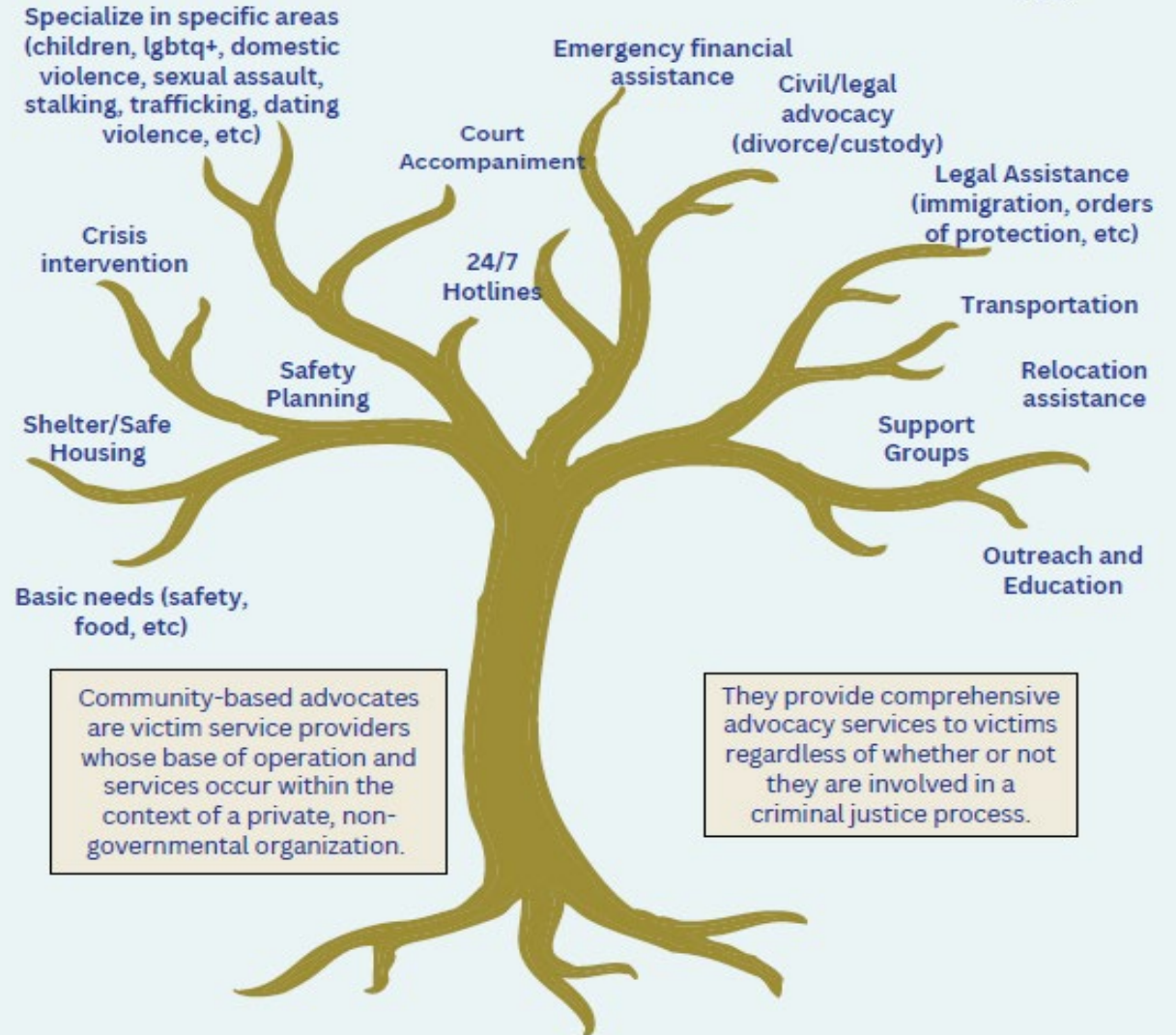
- Can provide comprehensive advocacy, crisis intervention services, 24hr access, emotional support, financial assistance, emergency shelter, transitional assistance, etc.
- Specialize in specific areas (children, LGBTQ+, domestic violence, sexual assault, stalking, trafficking, dating violence, etc.)
- Can provide a service to a victim whether the crime is reported or not
- No limitations on services or when services end
- Local advocacy agencies can be funded through federal, state, or private foundations, as well as community support, such as donations and fundraising

WHO'S CONSIDERED A LOCAL ADVOCACY AGENCY

- Court Appointed Special Advocates (CASA)
- Child Advocacy Centers (CAC)
- Domestic Violence and Sexual Assault Shelters and Services
- Culturally specific organizations – tribal programs, religious programs, or others

COMMUNITY-BASED SERVICES

Community-Based Victim Services



Community-based advocates are victim service providers whose base of operation and services occur within the context of a private, non-governmental organization.

They provide comprehensive advocacy services to victims regardless of whether or not they are involved in a criminal justice process.

They act as the bridge to get connected with services

They offer a survivor-driven model of empowerment that recognizes survivors are the experts in their own lives. This model respects the decisions of survivors regarding their and their family's wellbeing.

SYSTEMS-BASED PROGRAMS

WHAT THEY CAN DO:

- Can provide information and notification on criminal justice processes, emotional support, referrals, advocacy and accompaniment services, etc.
- Provide victim services and assistance to all crime victims, are not restricted by type of crime committed
- Cannot offer complete confidentiality the way local advocacy agencies can
- Services are provided at specific junctures of the criminal justice process
- Funding in systems-based programs ranges from grant funding to full time state and county funded positions.

WHO'S CONSIDERED A SYSTEMS-BASED PROGRAM:

- County Attorney Offices
- Department of Justice Victim Services
- Department of Corrections Victim Services



AVAILABLE RESOURCES

- Montana Coalition Against Domestic and Sexual Violence
 - <https://www.mcadsv.com/victim-service-programs-by-region/>
- Montana Department of Justice Victim Advocates (this is not current)
 - <https://dojmt.gov/victims/crime-victim-advocates/>

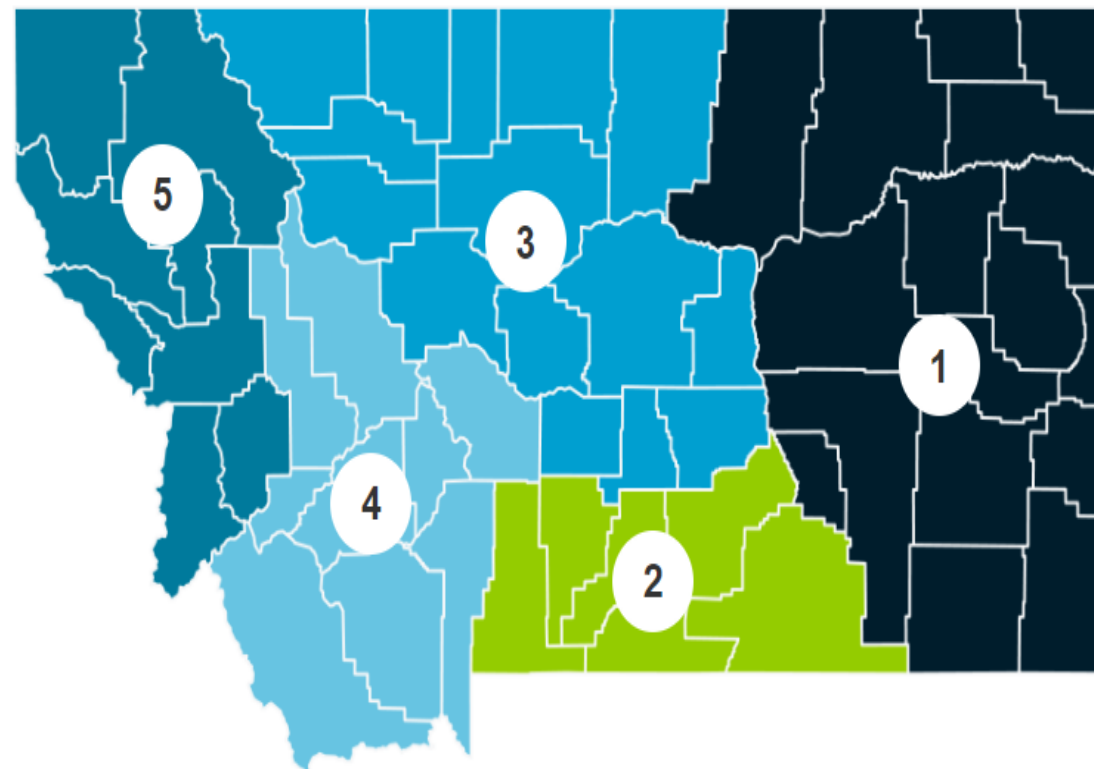
How the Montana Coalition supports
Montana programs

Member Programs

MONTANA COALITION AGAINST
DOMESTIC AND SEXUAL VIOLENCE

Regions

- 1 Forsyth, Glasgow, Glendive, Malta, Miles City, Sidney, and Wolf Point.
- 2 Billings, Columbus, Crow Agency, Lame Deer, Livingston, and Red Lodge.
- 3 Browning, Conrad, Great Falls, Harlem, Havre, Lewistown, Roundup, and Shelby.
- 4 Anaconda, Boulder, Bozeman, Butte, Deer Lodge, Dillon, Helena, Townsend, and Virginia City.
- 5 Hamilton, Kalispell, Libby, Missoula, Pablo/Ronan, Philipsburg, Superior, and Thompson Falls.



VICTIM SERVICE PROGRAMS BY REGION

REGION I

- **Custer County Attorney's Victim Witness Assistance Program**
 - 1010 Main St, Miles City, MT 59301
 - Office - [\(406\) 874-3305](tel:4068743305)
- **Custer Network Against Domestic Abuse and Sexual Assault (CNADA)**
 - 2200 Boxelder St. Ste #135, Miles City, MT 59301
 - Office - [\(406\) 234-0542](tel:4062340542)
- **NE MT Victim Services/Glasgow Police Dept**
 - 80 Airport Rd, Glasgow, MT 59230
 - Office - [\(406\) 228-8050](tel:4062288050)
 - <https://www.cityofglasgowmt.com/services>
- **Richland County Coalition Against Domestic Violence**
 - PO Box 822, Sidney, MT 59270
 - Office - [\(406\) 433-7421](tel:4064337421)
 - Crisis Line - [\(406\) 973-1635](tel:4069731635)

REGION 2

ASPEN

- PO Box 653, Livingston, MT 59047
- **Office** - [\(406\) 222-5902](tel:4062225902)
- **24 Hr. Crisis Line** - [\(406\) 222-8154](tel:4062228154)
- <https://www.aspenmt.org/>

Carbon County Attorney's Office

- PO Box 810, 102 N. Broadway, Red Lodge, MT 59068
- **Office** - [\(406\) 446-3300](tel:4064463300)
- **Text** - [\(406\) 426-4403](tel:4064264403)

Domestic and Sexual Violence Services (DSVS)

- PO Box 314, Red Lodge, MT 59068
- **Office** - [\(406\) 446-2296](tel:4064462296)
- **24 Hr. Crisis Line** - [\(406\) 425-2222](tel:4064252222)
- <https://dsvsmontana.org/>

Stillwater County Advocates

- PO Box 179, 544 Diamond, Columbus, MT 59019
- **Office** - [\(406\) 321-4333](tel:4063214333)

YWCA Billings

- 909 Wyoming Ave, Billings, MT 59101
- **Office** - [\(406\) 252-6303](tel:4062526303)
- **24 Hr. Crisis Line** - [\(406\) 245-4472](tel:4062454472)
- <https://www.ywcabillings.org/>

Cascade County Attorney's Office

- 121 4th St N, Suite 2A, Great Falls, MT 59401
- Office - **(406) 454-6915**

District 4 HRDC Victim Services

- 2229 5th Ave, Havre, MT 59501
- Office - **(406) 265-6743**
- 24 Hr. Crisis Line - **(406) 265-2222**
- <https://hrdc4.org/>

Hi-Line's Help for Abused Spouses

- 300 North Virginia #307, Conrad, MT 59425
- Office - **(406) 278-3342**
- 24 Hr. Crisis Line - **(800) 219-7336**
- <https://www.hlhas.com/>

Saves, Inc

- PO Box 404, Lewistown, MT 59457
- Office - **(406) 535-2303**
- 24 Hr. Crisis Line - **(406) 535-2303**

Toole County Victim Advocate

- PO Box 730, Shelby, MT 59474
- Office - **(406) 450-0335**
- Crisis Line - **(406) 450-0335**

Victim-Witness Assistance Services

- PO Box 2628, Great Falls, MT 59403
- Office - **(406) 315-1111**

YWCA of Great Falls

- 220 Second Street North, Great Falls, MT 59401
- Office - **(406) 452-1315**
- 24 Hr. Crisis Line - **(406) 453-1018**
- <https://ywcagreatfalls.org/>

REGION 3

REGION 4

City Attorney's Office, City of Helena

- 316 N Park Ave, Helena, MT 59623
- Office - [\(406\) 457-8595](tel:(406)457-8595)
- <https://www.helenamt.gov/government/departments/city-attorney>

Gallatin County Victim Assistance Program

- 615 South 16th Ave, Room 313, Bozeman, MT 59715
- Office - [\(406\) 582-2075](tel:(406)582-2075)

Haven

- PO Box 752, Bozeman, MT 59771
- Office - [\(406\) 586-7689](tel:(406)586-7689)
- 24 Hr. Crisis Line - [\(406\) 586-4111](tel:(406)586-4111)
- <https://havenmt.org/>

MSU Voice Center

- SUB 370, Bozeman, MT 59717
- Office - [\(406\) 994-7142](tel:(406)994-7142)
- 24 Hr. Crisis Line - [\(406\) 994-7069](tel:(406)994-7069)
- <https://www.montana.edu/oha/voice/>

REGION 4 CONTINUED

Safe Space

- PO Box 594, Butte, MT 59703
- Office - [\(406\) 782-9807](tel:(406)782-9807)
- 24 Hr. Crisis Line - [\(406\) 782-8511](tel:(406)782-8511)
- <http://www.safespaceonline.org/>

Sexual Assault Counseling Center

- 421 E Peach, Bozeman, MT 59715
- Office - [\(406\) 587-7511](tel:(406)587-7511)
- 24 Hr. Crisis Line - [\(406\) 586-3333](tel:(406)586-3333)
- <https://www.bozemanhelpcenter.org/>

The Friendship Center

- 1430 Sanders, Helena, MT 59601
- Office - [\(406\) 442-6800](tel:(406)442-6800)
- Crisis - [\(406\) 442-6800](tel:(406)442-6800)
- <https://www.thefriendshipcenter.org/>

Women's Resource Center/Community Support Center

- PO Box 888, Dillon, MT 59725
- Office [\(406\) 683-6106](tel:(406)683-6106)
- 24 Hr. Crisis Line - [\(800\) 253-9811](tel:(800)253-9811)

YWCA of Helena

- 501 N Park, Helena, MT 59601
- Office - [\(406\) 442-8774](tel:(406)442-8774)
- <https://www.ywcahelena.org/>

First Step Resource Center

- Address Not Available
- Office - [\(406\) 329-5776](tel:4063295776)
- <https://www.providence.org/?region=mt>

LIBBY COMMUNITY INTERAGENCIES INC, DBA LINCOLN CO CRISIS SOLUTIONS

- PO Box 390, Libby, MT 59923
- Office - [\(406\) 291-0522](tel:4062910522)
- 24 Hr. Crisis Line - [\(406\) 293-3223](tel:4062933223)
- 24 Hr. Crisis Line - [\(877\) 493-7139](tel:8774937139)

MINERAL COUNTY CRIME VICTIM ADVOCATE PROGRAM

- PO Box 339, Superior, MT
- Office - [\(406\) 822-3542](tel:4068223542)
- Advocate Cell - [\(406\) 880-4476](tel:4068804476)
- Advocate Cell - [\(406\) 531-1994](tel:4065311994)
- <https://co.mineral.mt.us/departments/attorney/>

MISSOULA CITY-COUNTY RELATIONSHIP VIOLENCE SERVICES

- 200 W Broadway, Missoula, MT 59802
- Office - [\(406\) 258-3830](tel:4062583830)
- <https://www.missoulacounty.us/services/victim-services>

SAFE (SUPPORTERS OF ABUSE FREE ENVIRONMENT)

- PO Box 534, Hamilton, MT 59840
- Office - [\(406\) 363-2793](tel:4063632793)
- 24 Hr. Crisis Line - [\(406\) 363-4600](tel:4063634600)
- <https://www.safeinthebitterroot.org/>

REGION 5

Safe Harbor

- PO Box 497, Ronan, MT 59864
- Office - [\(406\) 676-0992](tel:4066760992)
- 24 Hr. Crisis Line - [\(406\) 676-0800](tel:4066760800)
- <https://safeharbormt.org/>

SANDERS COUNTY COALITION FOR FAMILIES, INC.

- PO Box 1136, Thompson Falls, MT 59873
- Office - [\(406\) 827-3218](tel:4068273218)
- 24 Hr. Crisis Line - [\(800\) 265-0415](tel:8002650415)
- <https://scdf.org/>

Student Advocacy Resource Center (SARC)

- 634 Eddy Ave, Missoula, MT 59812
- Office - [\(406\) 243-4429](tel:4062434429)
- 24 Hr. Crisis Line - [\(406\) 243-6559](tel:4062436559)

The Abbie Shelter

- PO Box 1401, Kalispell, MT 59903
- Office - [\(406\) 752-4735](tel:4067524735)
- 24 Hr. Crisis Line - [\(406\) 752-7273](tel:4067527273)
- <https://www.abbieshelter.org/>

YWCA Missoula

- 1800 S 3rd Street West, Missoula, MT 59801
- Office - [\(406\) 543-6691](tel:4065436691)
- Crisis [\(406\) 542-1944](tel:4065421944)
- <https://www.ywcamissoula.org/>

REGION 5
CONTINUED

NON-MEMBER PROGRAMS

Montana Board of
Crime Control Victim
Liaison Project



MONTANA
BOARD OF CRIME
CONTROL STATE
AND TRIBAL
VICTIM LIAISON
PROJECT

- Three-year project that seeks to collaborate with Montana Board of Crime Control (MBCC) staff, subgrantees, victim service providers, and the board to identify and address gaps in victim services through Montana.
- We have three main goals:
 - Collaborate with MBCC subgrantees, project partners, and victim service providers throughout the state to create a statewide Needs Assessment.
 - Collect data for MBCC's Statistical Analysis Center analysts to create an accurate, consistently updated map of victim services in Montana.
 - And form strong working relationships with and between victim service providers to implement a Montana Victim Services Network.
- The most important reason I bring this up is the creation of a statewide, consistently updated map of victim services!

STATEWIDE PROGRAMS

Department of Justice – Victim Services

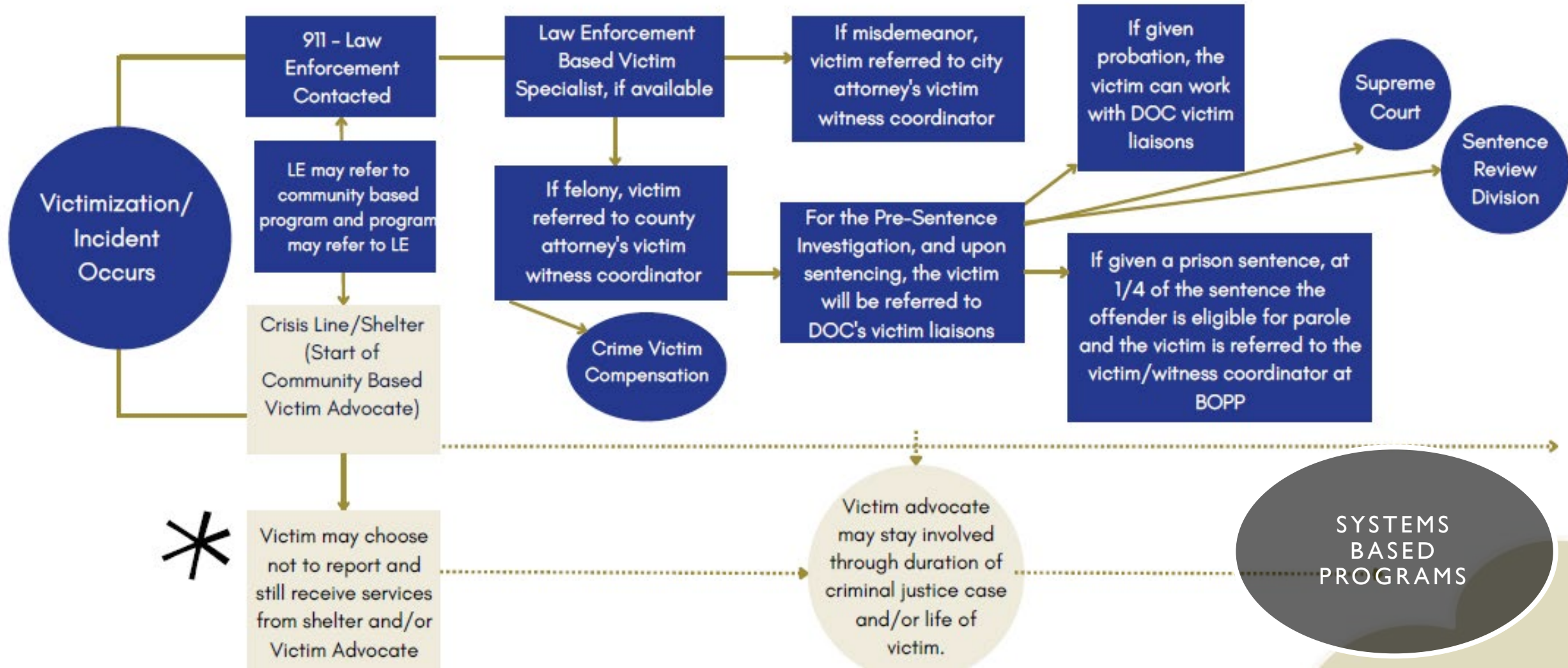
- <https://dojmt.gov/victims/>
- Phone: (406) 444-3653
Toll-Free: 1-800-498-6455
Fax: (406) 442-2174
E-mail: dojovs@mt.gov
- Crime Victim Compensation - <https://dojmt.gov/victims/crime-victim-compensation/>
- Address Confidentiality Program - <https://dojmt.gov/victims/address-confidentiality-program/>
- Hope Cards, Crime Victim Advocate information, and Fatality Review Commission and Native American Fatality Review

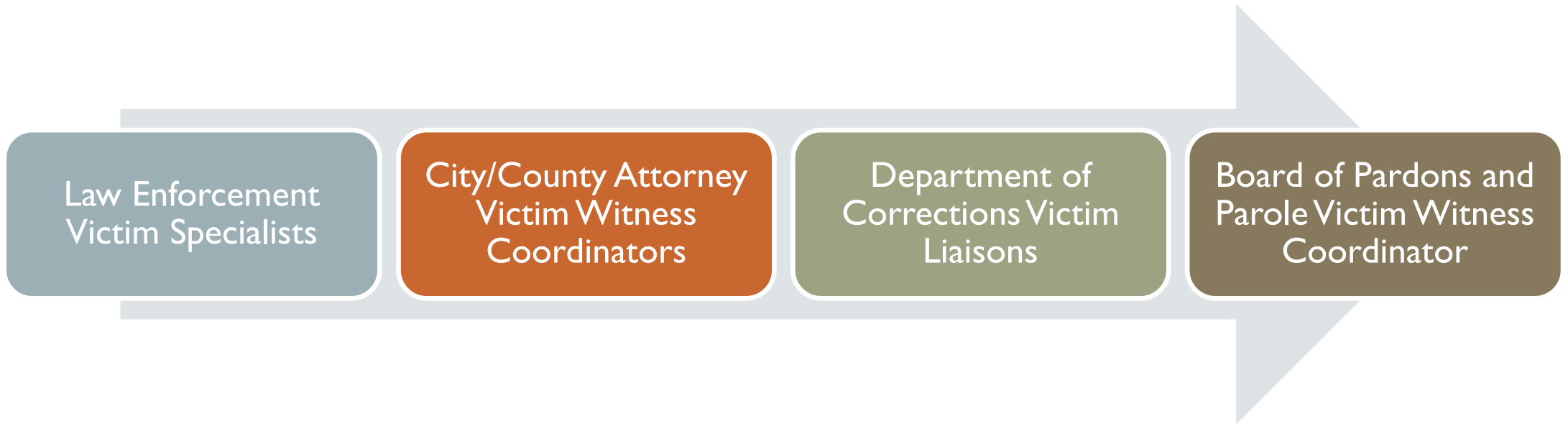
Department of Corrections – Victim Services

- <https://cor.mt.gov/Victims/>
- Helpline - (406) 444-0447 or Toll Free (888) 223-6332
- Email - CORVictimLiaison@mt.gov
- Mail - P.O. Box 201301, Helena, MT 59620-1320
- Assists with victim services and support following a felony conviction and commitment to secure placement or Department of Corrections.
- 5 Victim Liaisons throughout the state and 1 Victim Services Bureau Chief.

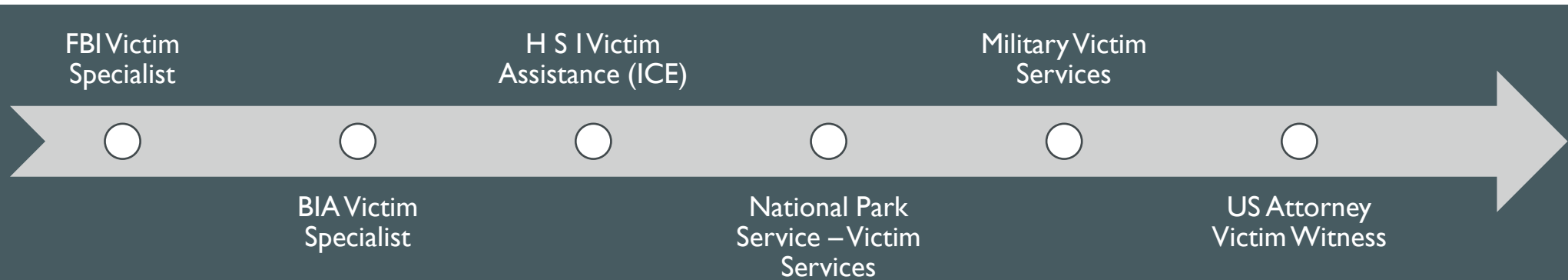
Montana Legal Services Association – Crime Victim Program

- <https://www.mtlsa.org/resource-map/>
- Crime Victim Attorney Program
- Resources Provided





SYSTEMS-BASED VICTIM SERVICES



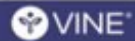
VINE (VICTIM INFORMATION NOTIFICATION EVERYDAY)



- **Registration is not automatic – participation is voluntary**
- **VINE (Victim Information & Notification Every Day)** is a free, confidential, automated telephone, text messaging, and email system that provides custody status information about adult felony offenders under Montana Department of Corrections supervision – in prison and community-based facilities and programs.
 - Offender must be under DOC supervision prior to registration
 - Location and custody status updates on all adult offenders under DOC supervision – prison and community corrections and programs
 - Option to register for automated notification by phone, email, mobile app, and/or text messaging
 - Free to users (DOC contracts with Appriss, Inc.)
 - Anyone can register or call for information 24/7
 - Free mobile app
 - Anonymous and confidential
 - Victim recognition – Most states have VINE
 - Interstate Compact varies from state to state which notifications are available
 - MTVINE will no longer send notifications for offender's on Interstate Compact
 - It is the victim's responsibility to keep contact information current with VINE, DOC, District Court, BOPP
 - To access: <https://vinelink.com>

VINE

VINE Workflow Offender Data





SEXUAL OR VIOLENT OFFENDER REGISTRY

- Montana's Sexual or Violent Offender Registration Act is designed to protect the public from sexual or violent offenders by requiring offenders to register with local law enforcement agencies in the jurisdiction where they reside. Information about these offenders is then made available to the public.
- This Registry provides an up-to-date listing of sexual and violent offenders who are required to register their whereabouts
- To access: <https://app.doj.mt.gov/apps/svow/search/>

LIMITED SCOPE PROGRAMS

University of Montana Student Advocacy Resource Center (SARC), Missoula

Montana State University Voice Center, Bozeman

Angela's Piazza, Billings

CASAs

Kim Ranger she/her

Administrative Director

Montana Coalition Against
Domestic & Sexual Violence

406 443 7794 ext. 111

kranger@mcadsv.com

mcadsv.com



Tawny Rogers

She/Her/Hers

State Victim Liaison

Montana Board of Crime Control

Office: 406-444-0213 | Cell: 406-781-3406

Email: tawny.rogers@mt.gov

5 S. Last Chance Gulch | PO Box 201408 | Helena, MT 59620

THANK YOU!